

One Caspian Point



Status: 7,232 sq ft to let
with 23,472 sq ft currently under offer
Net Internal Area: 67,866 sq ft

Forming a major part of Cardiff Waterside, this contemporary building is arranged over six floors and is designed to meet the needs of the modern business occupier.

One Caspian Point

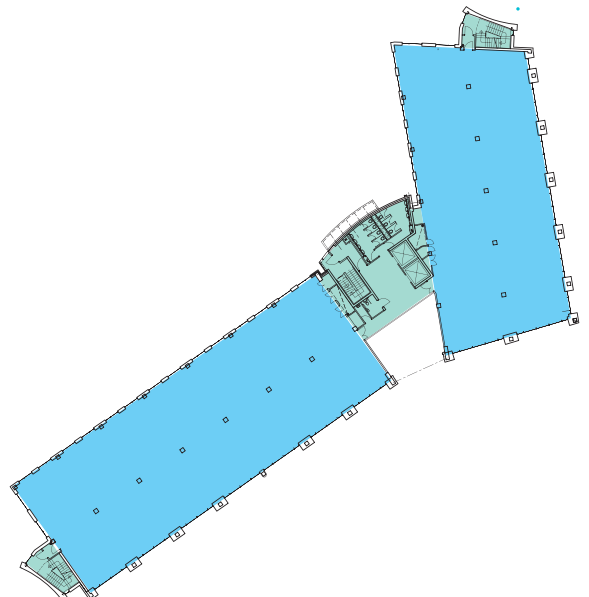


Status: 7,232 sq ft to let
with 23,472 sq ft currently under offer
Net Internal Area: 67,866 sq ft

For further information on Lease Terms and to explore your business needs, please contact



Morley endorses the Code of Practice for Commercial Property Leases in England and Wales, produced by the Commercial Leases Group and published by RICS Business Services. These details are for general guidance only and are not intended to form an offer or part of an offer. All details are given in good faith and are believed to be correct, but any intending purchasers or tenants should not rely on them as statements or representations of fact, but must satisfy themselves by inspection or otherwise as to their correctness. November 2007



Cardiff Waterside connections

Where is Cardiff Waterside?

Cardiff Waterside is within walking distance of the city centre, on the shore of a stunning freshwater bay. Few cities offer such a combination of urban convenience and natural splendour. From here, it's less than two hours to London or Birmingham, and only a short drive to some of Britain's most magnificent countryside.

Transport /connections

Cardiff Waterside is superbly connected to the UK, Europe and the world by road, rail and air. It's just two hours to Heathrow Airport by train, and Cardiff International Airport connects you to a host of European destinations, as well as major cities in the US and Canada. More locally, excellent bus, train and even boat-bus services mean hassle-free commutes, and excellent links to the Welsh countryside.

Destinations	miles
Cardiff Bay Station	0.3
Cardiff Central	1.8
Cardiff International Airport	12.0
M4 – Junction 33	6.0
London	150.0
Heathrow Airport	135.0
Bristol	41.0
Swindon	76.0
Reading	114.0

